

**WRITTEN QUESTION TO THE MINISTER FOR HEALTH AND SOCIAL SERVICES
BY DEPUTY M.R. HIGGINS OF ST. HELIER
ANSWER TO BE TABLED ON TUESDAY 10th JULY 2018**

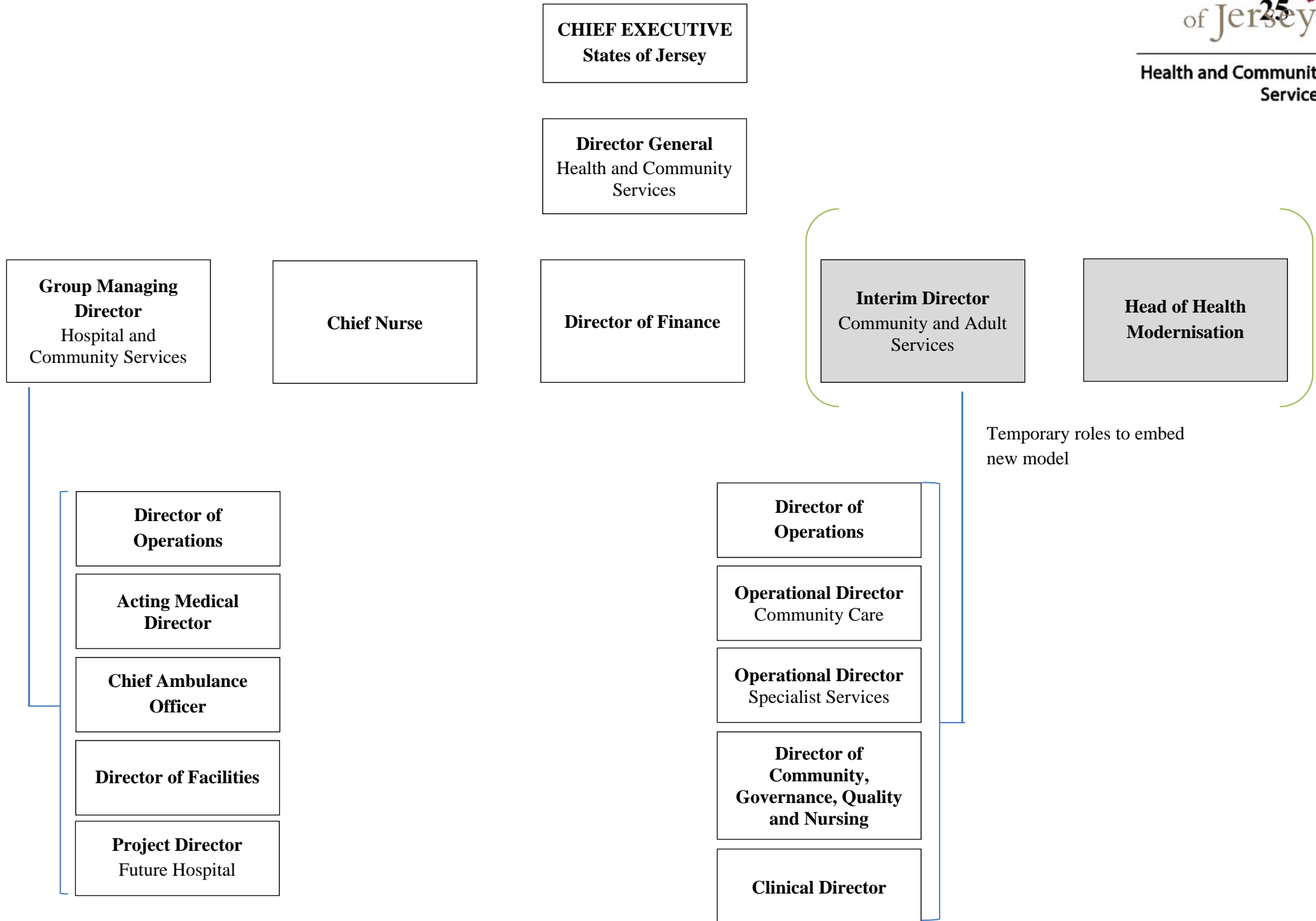
Question

Will the Minister produce for Members a current chart showing the structure of his Department and the number and grade of people working in each area?

Answer

The Health and Community Services Department is currently in the midst of major organisational change and the high-level structure diagram shows the current situation as it evolves in the transition to the new Target Operating Model.

Given the thousands of staff employed by the department, it has not been possible to further breakdown the number of staff by grade. However, if any States Member has a query about a particular area then we can seek to provide more specific detail in terms of an organisational chart and grades of staff.



HSSD – People in post at 1.7.18.						
	Civil Servants	Doctors & Consultants	Manual Workers	Nurses and Midwives	Other Health Pay Groups	Grand Total
Community & Social Services	181	12	4	317	8	522
Adults Services	162	9	1	190	8	370
Older Peoples Services	19	3	3	127		152
Hospital	434	151	33	656	36	1,310
Ambulance Emergency Services	22		13		35	70
Clinical Support	242	18		45		305
Hospital	4			11		15
Medical Specialities & Emergency Care	23	50		224		297
Operational Support Services	99		2	31	1	133
Surgical Services	24	37		126		187
Theatres	7	22	18	93		140
Women & Children	13	24		126		163
Chief Executive's Office	18					18
Chief Executive's Office	18					18
Chief Nurse	37		4	7		48
Chief Nurse	37		4	7		48
Finance & ICT	83	1	342			426
Facilities Management	34		342			376
Finance & ICT	49	1				50
System Re-design and Delivery	19	1		3		23
System Re-design and Delivery	19	1		3		23
Grand Total	772	165	383	983	44	2,347